



GAT MONTHLY MEMBERSHIP PROGRESS REPORT

Results as of: 3/31/2023

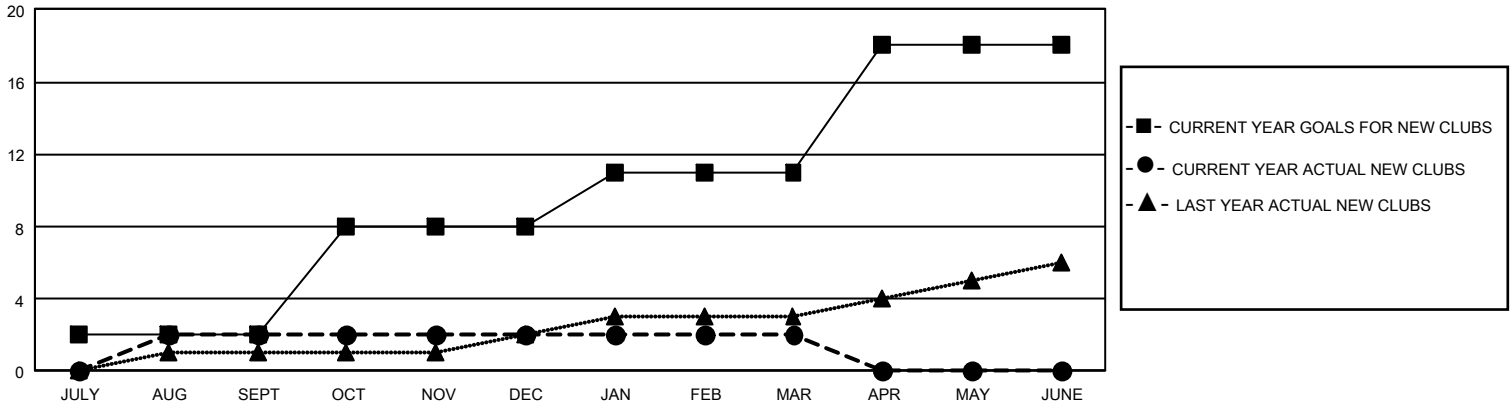
GMT Constitutional Area 1, Group N

REPORT DOES NOT INCLUDE CLUBS IN UNDISTRICTED AREAS.

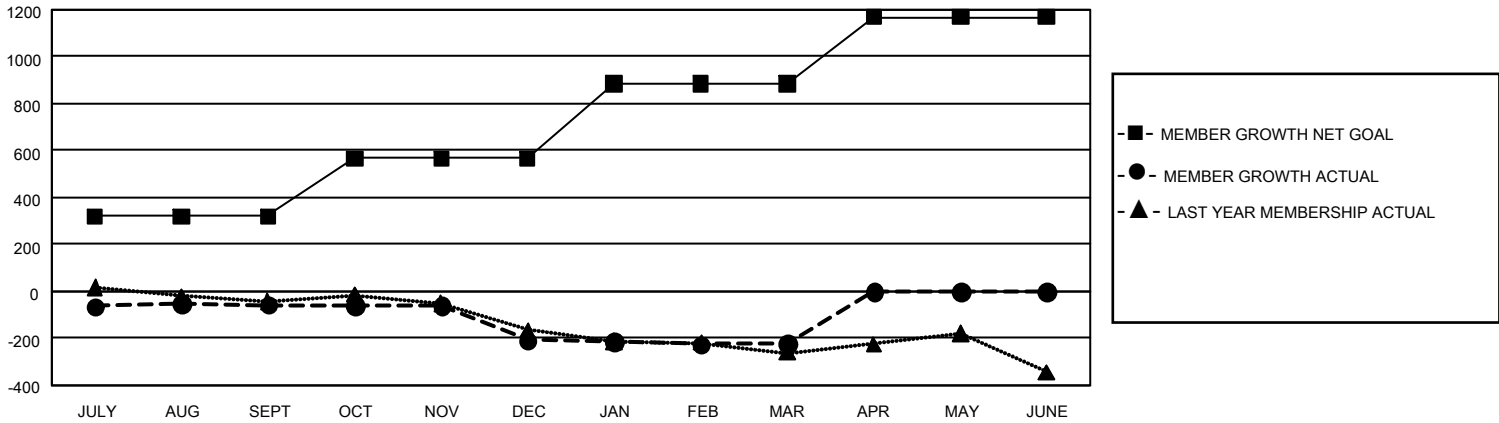
Clubs			
RESULTS FOR 2022-2023			
QUARTER	NEW CLUB GOAL	NEW CLUBS	DROPPED CLUBS
JULY/AUG/SEPT	6	2	4
OCT/NOV/DEC	18	0	6
JAN/FEB/MAR	9	0	4
APR/MAY/JUNE	21	0	0

Members			
RESULTS FOR 2022-2023			
QUARTER	MEMBER GROWTH NET GOAL	MEMBER GROWTH ACTUAL	DROPPED MEMBERS ACTUAL (including transfers)
JULY/AUG/SEPT	319	350	378
OCT/NOV/DEC	247	301	423
JAN/FEB/MAR	320	343	330
APR/MAY/JUNE	282	0	0

GOALS AND ACTUAL NEW CLUBS CUMULATIVE



GOALS AND ACTUAL MEMBERS CUMULATIVE



DROPPED CLUBS: 14	267 CLUBS OF 544 ADDED 1 OR MORE NEW MEMBERS	GENDER DISTRIBUTION	
		MALE 7,697 (63.89%) FEMALE 4,343 (36.05%) NON BINARY 1 (0.01%) PREFER NOT TO ANSWER 7 (0.06%)	
DROPPED MEMBERS		TOTAL FAMILY UNIT MEMBERS 2,313	
DECEASED 155 CLUB CANCELLED 41 OTHER 934 TOTAL 1,130	CLICK HERE FOR CUMULATIVE MEMBERSHIP DATA	FAMILY MEMBERS PAYING HALF DUES 1,185	